

Kleiner Knabe, großer Gott

Sopranblockflöte

Orgel

Measures 1-4: Soprano Recorder part features a melodic line with eighth and sixteenth notes. The Organ accompaniment consists of chords in the right hand and a simple bass line in the left hand.

5

Sbfl.

Org.

Measures 5-8: Alto Flute part continues the melodic line. The Organ accompaniment features more complex chordal textures and a steady bass line.

9

Sbfl.

Org.

Measures 9-12: Alto Flute part continues the melodic line. The Organ accompaniment features more complex chordal textures and a steady bass line.

13 *bei der ersten und dritte Strophe*

Sbfl.

Chor

1. Klei - ner Kna - be, gro - ßer_ Gott! Schöns - te Blu - me weiß und rot,
 2. Nimm mich an, ge - lieb - tes_ Kind und be - fühl mir nur ge - schwind!
 3. Nimm mich an, o Je - su_ mein. Denn ich wün - sche, dein zu sein;

Org.

17

Sbfl.

Chor

von Ma - ri - a neu - ge - bo - ren, un - ter tau - send aus - er - ko - ren.
 Re - ge dei - ne sü - ßen Lip - pen, ru - fe mich zu dei - ner Krip - pen,
 dein ver - bleib ich, weil ich le - be, dein, wenn ich den Geist auf - ge - be.

Org.

21

Sbfl.



Chor

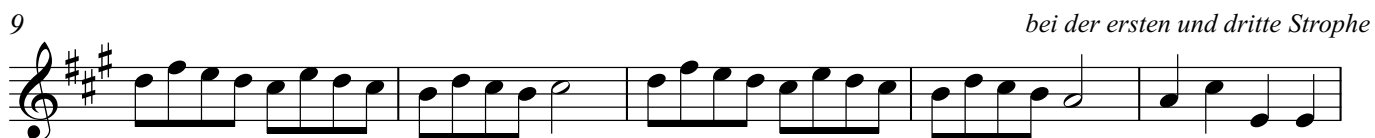
Al - ler - lieb - stes Je - su - lein, laß mich doch dein Die-ner sein!
tu_ mir durch dein'n hol- denMund dei - nen lieb - sten Wil-len kund.
Wer dir_dient, du star- ker_Held, der be-herrscht die gan-ze Welt.



Org.



Kleiner Knabe, großer Gott



Kleiner Knabe, großer Gott

12

1. Klei - ner Kna - be, gro - ßer Gott! Schöns - te Blu - me weiß und rot,
 2. Nimm mich an, ge - lieb - tes Kind und be - fühl mir nur ge - schwind!
 3. Nimm mich an, o Je - su mein. Denn ich wün - sche, dein zu sein;

12

17

von Ma - ri - a neu - ge - bo - ren, un - ter tau - send aus - er - ko - ren.
 Re - ge dei - ne sü - ßen Lip - pen, ru - fe mich zu dei - ner Krip - pen,
 dein ver - bleib ich, weil ich le - be, dein, wenn ich den Geist auf - ge - be.

21

Al - ler - lieb - stes Je - su - lein, laß mich doch dein Die - ner sein!
 tu mir durch dein'n hol - den Mund dei - nen lieb - sten Wil - len kund.
 Wer dir dient, du star - ker Held, der be - herrscht die gan - ze Welt.

Orgel

Kleiner Knabe, großer Gott

Measures 1-6 of the organ piece. The music is in G major (one sharp) and common time. The right hand features a melodic line with eighth and quarter notes, while the left hand provides a bass line with quarter and eighth notes. The piece begins with a series of chords in the right hand.

7

Measures 7-12. The right hand continues the melodic line, incorporating some grace notes. The left hand has a more active bass line with eighth notes and rests. The texture is primarily chordal in the right hand.

13

Measures 13-18. This section features a more complex texture with sixteenth-note patterns in the right hand and a steady bass line in the left hand. The right hand has a rhythmic accompaniment of sixteenth notes.

19

Measures 19-24, the final section of the piece. It concludes with a series of chords in the right hand and a final bass line in the left hand. The right hand has a melodic flourish in the final measure.