

Only a short one

Markus Nickel

Sopranblockflöte

Altblockflöte

Tenorblockflöte

Bassblockflöte

Großbassblockflöte

5

Sbfl.

Abfl.

Tbfl.

Bbfl.

Grbbfl.

10

Sbfl.

Abfl.

Tbfl.

Bbfl.

Grbbfl.

15

Sbfl.
Abfl.
Tbfl.
Bbfl.
Grbfl.

This system contains measures 15 through 19. The Soprano Flute (Sbfl.) and Alto Flute (Abfl.) parts begin in measure 15 with a melodic line. The Tenor Flute (Tbfl.) and Baritone Flute (Bbfl.) parts enter in measure 16 with a similar melodic line. The Contrabass Flute (Grbfl.) part provides a rhythmic accompaniment of eighth notes. The music concludes in measure 19 with a final cadence.

20

Sbfl.
Abfl.
Tbfl.
Bbfl.
Grbfl.

This system contains measures 20 through 24. The Soprano Flute (Sbfl.) part continues its melodic line. The Alto Flute (Abfl.) part has a more active role, playing a series of eighth notes. The Tenor Flute (Tbfl.) and Baritone Flute (Bbfl.) parts play a steady accompaniment of quarter notes. The Contrabass Flute (Grbfl.) part continues with eighth notes. The music concludes in measure 24 with a final cadence.

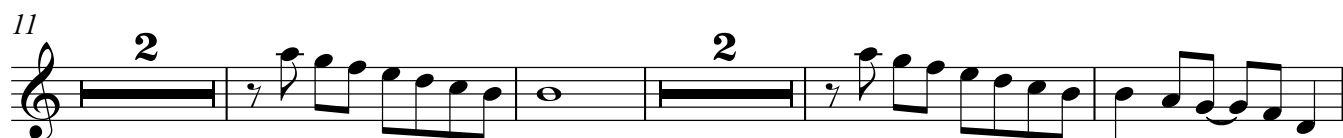
25

Sbfl.
Abfl.
Tbfl.
Bbfl.
Grbfl.

This system contains measures 25 through 28. The Soprano Flute (Sbfl.) part features a more complex melodic line with sixteenth notes. The Alto Flute (Abfl.) part plays a steady accompaniment of quarter notes. The Tenor Flute (Tbfl.) and Baritone Flute (Bbfl.) parts play a steady accompaniment of quarter notes. The Contrabass Flute (Grbfl.) part continues with eighth notes. The music concludes in measure 28 with a final cadence.

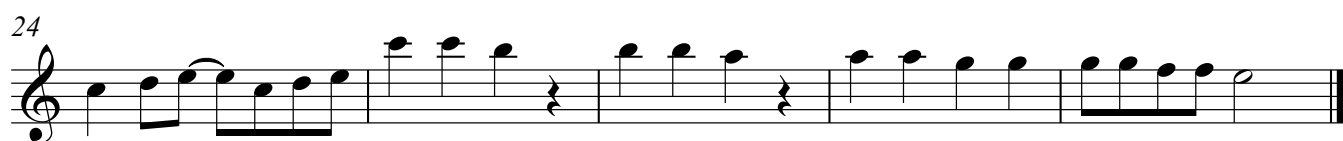
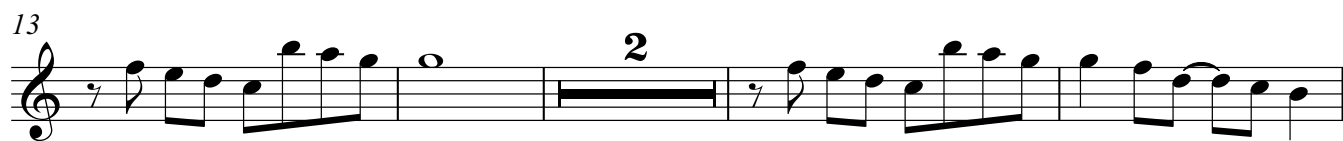
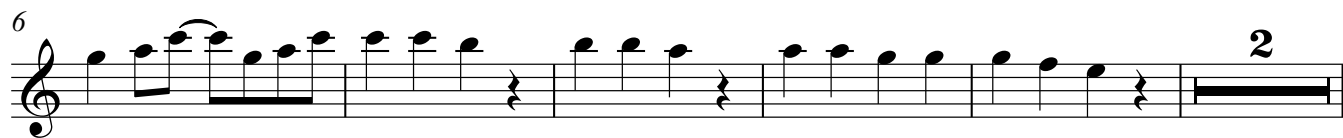
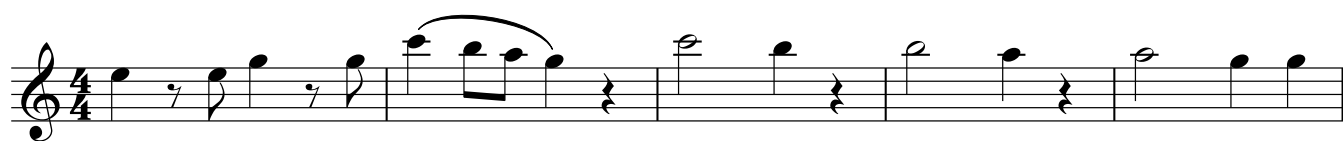
Only a short one

Markus Nickel



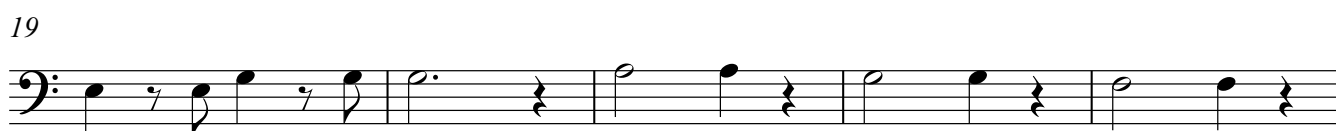
Only a short one

Markus Nickel



Only a short one

Markus Nickel



Only a short one

Markus Nickel



7



13



19



24

