

Markus Nickel

# Der Reihe nach...

kleine Spielmusik für Blockflötensextett (Sopran, 2 Alt, 2 Tenor, Bass)

# 1. zuerst...

Musical score for woodwinds in 4/4 time, key of B-flat major. The score consists of six staves:

- Sopranblockflöte: Treble clef, playing a melodic line with eighth-note patterns.
- Altblockflöte: Treble clef, playing a melodic line with eighth-note patterns.
- Altblockflöte: Treble clef, playing a melodic line with eighth-note patterns.
- Tenorblockflöte: Treble clef, playing a melodic line with eighth-note patterns.
- Tenorblockflöte: Treble clef, playing a melodic line with eighth-note patterns.
- Bassblockflöte: Bass clef, playing a melodic line with eighth-note patterns.

Musical score for woodwinds in 4/4 time, key of B-flat major. The score consists of six staves:

- Sbfl. (Soprano Flute): Treble clef, playing a melodic line with eighth-note patterns.
- Abfl. (Alto Flute): Treble clef, playing a melodic line with eighth-note patterns.
- Abfl. (Alto Flute): Treble clef, playing a melodic line with eighth-note patterns.
- Tblfl. (Tenor Flute): Treble clef, playing a melodic line with eighth-note patterns.
- Tblfl. (Tenor Flute): Treble clef, playing a melodic line with eighth-note patterns.
- Bbfl. (Bass Flute): Bass clef, playing a melodic line with eighth-note patterns.

5

Sbfl.  
Abfl.  
Abfl.  
Tbfl.  
Tbfl.  
Bbfl.

This musical system covers measures 5 and 6. It features six staves: Soprano Flute (Sbfl.), two Alto Flutes (Abfl.), two Tenor Flutes (Tbfl.), and Bass Flute (Bbfl.). The key signature is one flat (B-flat). Measure 5 shows the Soprano Flute with a melodic line starting on a quarter rest, followed by eighth and sixteenth notes. The Alto Flutes play a rhythmic pattern of eighth notes with slurs. The Tenor Flutes play a similar eighth-note pattern. The Bass Flute plays a steady eighth-note accompaniment. Measure 6 continues these patterns, with the Soprano Flute playing a more active melodic line.

7

Sbfl.  
Abfl.  
Abfl.  
Tbfl.  
Tbfl.  
Bbfl.

This musical system covers measures 7 and 8. It features the same six staves as the previous system. Measure 7 shows the Soprano Flute with a melodic line starting on a quarter rest, followed by eighth and sixteenth notes. The Alto Flutes play a rhythmic pattern of eighth notes with slurs. The Tenor Flutes play a similar eighth-note pattern. The Bass Flute plays a steady eighth-note accompaniment. Measure 8 continues these patterns, with the Soprano Flute playing a more active melodic line.

9

Sbfl.  
Abfl.  
Abfl.  
Tbfl.  
Tbfl.  
Bbfl.

This musical score covers measures 9, 10, and 11. It features six staves: two for Soprano Flute (Sbfl.) and Alto Flute (Abfl.), two for Tenor Flute (Tbfl.), and one for Bass Flute (Bbfl.). The key signature has one flat (B-flat). Measures 9 and 10 show a rhythmic pattern of quarter notes and eighth notes with accents. Measure 11 features a more complex rhythmic pattern with sixteenth notes and accents.

12

Sbfl.  
Abfl.  
Abfl.  
Tbfl.  
Tbfl.  
Bbfl.

This musical score covers measures 12, 13, and 14. It features the same six staves as the previous section. Measures 12 and 13 show a rhythmic pattern of quarter notes and eighth notes with accents. Measure 14 features a more complex rhythmic pattern with sixteenth notes and accents. The Tenor Flute (Tbfl.) and Bass Flute (Bbfl.) staves are mostly silent in this section, indicated by horizontal lines.

15

Sbfl.

Abfl.

Abfl.

Tbfl.

Tbfl.

Bbfl.

Detailed description: This musical score block covers measures 15 through 18. It features six staves: Soprano Flute (Sbfl.), two Alto Flutes (Abfl.), two Tenor Flutes (Tbfl.), and Bass Flute (Bbfl.). The key signature is one flat (B-flat major or D minor). In measure 15, the Abfl. and Bbfl. parts are active, while the others are silent. In measure 16, the Abfl. and Bbfl. continue, and the two Tbfl. parts enter with a rhythmic pattern. In measure 17, the Sbfl. and the second Abfl. part enter with a melodic line, while the other parts continue. In measure 18, all parts are active, with the Sbfl. and second Abfl. playing a more complex melodic line. The notation includes various note values, rests, and articulation marks.

19

Sbfl.

Abfl.

Abfl.

Tbfl.

Tbfl.

Bbfl.

Detailed description: This musical score block covers measures 19 through 22. It features the same six staves as the previous block. In measure 19, the Abfl. and Bbfl. parts are active, while the others are silent. In measure 20, the Abfl. and Bbfl. continue, and the two Tbfl. parts enter with a rhythmic pattern. In measure 21, the Sbfl. and the second Abfl. part enter with a melodic line, while the other parts continue. In measure 22, all parts are active, with the Sbfl. and second Abfl. playing a more complex melodic line. The notation includes various note values, rests, and articulation marks.

22 rit. . . . .

Sbfl.  
Abfl.  
Abfl.  
Tbfl.  
Tbfl.  
Bbfl.

This musical score covers measures 22, 23, and 24. It is written for six brass instruments: Soprano Flugelhorn (Sbfl.), two Alto Flugelhorn (Abfl.), two Tenor Trombone (Tbfl.), and Bass Trombone (Bbfl.). The key signature has one flat (B-flat). Measure 22 shows the Soprano Flugelhorn and Tenor Trombone parts starting with a melodic line, while the Alto Flugelhorn and Bass Trombone parts have rests. Measure 23 continues the melodic development in the Soprano Flugelhorn and Tenor Trombone parts. Measure 24 features a 'rit.' (ritardando) marking and shows all parts with active melodic lines.

25 - a tempo

Sbfl.  
Abfl.  
Abfl.  
Tbfl.  
Tbfl.  
Bbfl.

This musical score covers measures 25, 26, and 27. It is written for the same six brass instruments as the previous system. The key signature remains one flat. Measure 25 begins with a '25 - a tempo' marking. The Soprano Flugelhorn part has a melodic line with eighth notes, while the other parts have rests. Measure 26 continues the melodic lines for all parts. Measure 27 concludes the section with a final melodic flourish in all parts.

27

Sbfl.

Abfl.

Abfl.

Tbfl.

Tbfl.

Bbfl.

This musical score block covers measures 27 and 28. It features six staves: Soprano Flute (Sbfl.), two Alto Flutes (Abfl.), two Tenor Flutes (Tbfl.), and Bass Flute (Bbfl.). The key signature is one flat (B-flat). Measure 27 shows the Soprano Flute with a rest followed by a sixteenth-note triplet. The Alto Flutes play a continuous sixteenth-note pattern. The Tenor Flutes have rests followed by sixteenth-note patterns. The Bass Flute plays a simple eighth-note line. Measure 28 continues these patterns with some melodic variation in the upper parts.

29

Sbfl.

Abfl.

Abfl.

Tbfl.

Tbfl.

Bbfl.

This musical score block covers measures 29 and 30. It features the same six staves as the previous block. Measure 29 shows the Soprano Flute with a rest followed by a sixteenth-note triplet. The Alto Flutes play a continuous sixteenth-note pattern. The Tenor Flutes have rests followed by sixteenth-note patterns. The Bass Flute plays a simple eighth-note line. Measure 30 continues these patterns with some melodic variation in the upper parts.

# 2. und dann...

7

Markus Nickel

1

Sopranblockflöte

Altblockflöte

Altblockflöte

Tenorblockflöte

Tenorblockflöte

Bassblockflöte

Detailed description: This system contains the first four measures of the piece. It features six staves for woodwinds. The top staff is for Soprano Flute (Sopranblockflöte), the next two for Alto Flute (Altblockflöte), the next two for Tenor Flute (Tenorblockflöte), and the bottom staff for Bass Flute (Bassblockflöte). The music is in 6/8 time with a key signature of two flats (B-flat and E-flat). The Soprano and Tenor flutes play a melodic line with eighth and sixteenth notes, while the Alto and Bass flutes provide harmonic support with various rhythmic patterns.

5

Sbfl.

Abfl.

Abfl.

Tbfl.

Tbfl.

Bbfl.

Detailed description: This system contains measures 5 through 9. It features six staves for woodwinds. The top staff is for Soprano Flute (Sbfl.), the next two for Alto Flute (Abfl.), the next two for Tenor Flute (Tbfl.), and the bottom staff for Bass Flute (Bbfl.). The music continues in 6/8 time with the same key signature. The Soprano Flute has a more active role with sixteenth-note passages, while the other instruments continue their respective parts.



10

Sbfl.

Abfl.

Abfl.

Tbfl.

Tbfl.

Bbfl.

This musical score covers measures 10 through 14. It features six staves: Soprano Flute (Sbfl.), two Alto Flutes (Abfl.), two Tenor Flutes (Tbfl.), and Bass Flute (Bbfl.). The key signature is B-flat major (two flats). The music is written in a 4/4 time signature. The Soprano Flute part begins with a melodic line in measure 10, while the other instruments provide harmonic support with various rhythmic patterns and rests.

15

Sbfl.

Abfl.

Abfl.

Tbfl.

Tbfl.

Bbfl.

This musical score covers measures 15 through 18. It features the same six staves as the previous system. The key signature remains B-flat major. In measure 15, the Soprano Flute part has a whole rest, while the other instruments continue their parts. The music concludes in measure 18 with various melodic and rhythmic elements across all parts.

19

Sbfl.  
Abfl.  
Abfl.  
Tbfl.  
Tbfl.  
Bbfl.

This musical system covers measures 19 through 22. It features six staves: one for Soprano Flute (Sbfl.) and five for various woodwinds (Abfl., Abfl., Tbfl., Tbfl., Bbfl.). The key signature is B-flat major (two flats). Measure 19 shows the flute with a whole rest and the bassoon with a quarter note. Measures 20-22 contain complex rhythmic patterns with eighth and sixteenth notes, including some triplets and slurs. The woodwinds provide harmonic support with various note values and rests.

23

Sbfl.  
Abfl.  
Abfl.  
Tbfl.  
Tbfl.  
Bbfl.

This musical system covers measures 23 through 27. It features the same six staves as the previous system. The key signature remains B-flat major. Measure 23 begins with a new melodic line for the flute. Measures 24-27 continue with intricate rhythmic patterns, including many sixteenth-note runs and slurs. The woodwinds play a variety of rhythmic figures, often in pairs, to support the flute's melody.

28

Sbfl.  
Abfl.  
Abfl.  
Tbfl.  
Tbfl.  
Bbfl.

This musical score covers measures 28 and 29. It features six staves: Soprano Flute (Sbfl.), two Alto Flutes (Abfl.), two Tenor Flutes (Tbfl.), and Bass Flute (Bbfl.). The key signature has two flats (B-flat and E-flat). Measure 28 shows the Soprano Flute playing a dotted quarter note followed by an eighth note, while other parts have rests. Measure 29 features more active parts, with the Soprano Flute playing a sixteenth-note run and the Bass Flute playing a dotted half note.

30

Sbfl.  
Abfl.  
Abfl.  
Tbfl.  
Tbfl.  
Bbfl.

This musical score covers measures 30, 31, and 32. It features the same six staves as the previous system. Measure 30 shows the Soprano Flute playing a dotted quarter note followed by an eighth note. Measure 31 features more active parts, with the Soprano Flute playing a sixteenth-note run and the Bass Flute playing a dotted half note. Measure 32 features a long note in the Soprano Flute and Alto Flutes, and a dotted half note in the Bass Flute.

### 3. zuletzt...

Markus Nickel

1

Sopranblockflöte  
Altblockflöte  
Altblockflöte  
Tenorblockflöte  
Tenorblockflöte  
Bassblockflöte

Detailed description: This system contains the first five measures of a woodwind section. The Soprano Flute (Sopranblockflöte) has a melodic line starting on G4. The first Alto Flute (Altblockflöte) plays a similar line an octave lower. The second Alto Flute (Altblockflöte) plays a sustained chord. The first Tenor Flute (Tenorblockflöte) plays a sustained chord. The second Tenor Flute (Tenorblockflöte) plays a sustained chord. The Bass Flute (Bassblockflöte) plays a sustained chord. The key signature has one flat (Bb) and the time signature is common time (C).

5

Sbfl.  
Abfl.  
Abfl.  
Tblfl.  
Tblfl.  
Bbfl.

Detailed description: This system contains measures 5 through 9. The Soprano Flute (Sbfl.) has a melodic line starting on G4. The first Alto Flute (Abfl.) plays a sustained chord. The second Alto Flute (Abfl.) plays a sustained chord. The first Tenor Flute (Tblfl.) plays a sustained chord. The second Tenor Flute (Tblfl.) plays a sustained chord. The Bass Flute (Bbfl.) plays a sustained chord. The key signature has one flat (Bb) and the time signature is common time (C).

9

Sbfl.  
Abfl.  
Abfl.  
Tbfl.  
Tbfl.  
Bbfl.

This musical score covers measures 9 through 12. It features six staves: Soprano Flute (Sbfl.), two Alto Flutes (Abfl.), two Tenor Flutes (Tbfl.), and Bass Flute (Bbfl.). The key signature has one flat (B-flat). The Soprano Flute part is the most active, with a melodic line that includes eighth and sixteenth notes. The other instruments provide harmonic support with various rhythmic patterns, including quarter notes, eighth notes, and rests.

13

Sbfl.  
Abfl.  
Abfl.  
Tbfl.  
Tbfl.  
Bbfl.

This musical score covers measures 13 through 16. It features the same six staves as the previous system. The key signature remains one flat. In measure 13, the Soprano Flute has a whole rest, while the Alto Flutes play a steady eighth-note pattern. The Tenor Flutes have a melodic line with slurs. The Bass Flute plays a simple quarter-note accompaniment. The system concludes in measure 16 with various rests and melodic fragments across the staves.

17

Sbfl.  
Abfl.  
Abfl.  
Tbfl.  
Tbfl.  
Bbfl.

This musical score block covers measures 17 through 20. It features six staves: Soprano Flute (Sbfl.), two Alto Flutes (Abfl.), two Tenor Flutes (Tbfl.), and Bass Flute (Bbfl.). The key signature is one flat (B-flat). In measure 17, the Soprano and Alto flutes are silent, while the Tenor and Bass flutes play a rhythmic pattern of eighth notes. In measure 18, the Soprano and Alto flutes enter with a melodic line of eighth notes. In measure 19, the Soprano and Alto flutes continue their melodic line, while the Tenor and Bass flutes play a steady eighth-note accompaniment. In measure 20, the Soprano and Alto flutes play a final melodic phrase, and the Tenor and Bass flutes provide a concluding accompaniment.

21

Sbfl.  
Abfl.  
Abfl.  
Tbfl.  
Tbfl.  
Bbfl.

This musical score block covers measures 21 through 25. It features the same six staves as the previous block. In measure 21, all flutes are active, with the Soprano and Alto flutes playing a melodic line and the Tenor and Bass flutes providing accompaniment. In measure 22, the Soprano and Alto flutes continue their melodic line, while the Tenor and Bass flutes play a steady eighth-note accompaniment. In measure 23, the Soprano and Alto flutes play a melodic phrase, and the Tenor and Bass flutes provide a concluding accompaniment. In measure 24, the Soprano and Alto flutes play a final melodic phrase, and the Tenor and Bass flutes provide a concluding accompaniment. In measure 25, the Soprano and Alto flutes play a final melodic phrase, and the Tenor and Bass flutes provide a concluding accompaniment.

26

Sbfl.  
Abfl.  
Abfl.  
Tbfl.  
Tbfl.  
Bbfl.

This musical score block covers measures 26 through 29. It features six staves: two for Soprano Flute (Sbfl.), two for Alto Flute (Abfl.), one for Tenor Flute (Tbfl.), and one for Bass Flute (Bbfl.). The music is in a key with one flat (B-flat major or D minor) and a 4/4 time signature. The Soprano Flute part has a melodic line with eighth and sixteenth notes. The Alto Flutes have a similar melodic line, often in unison. The Tenor Flute plays a steady eighth-note accompaniment. The Bass Flute provides a harmonic foundation with quarter and eighth notes.

30

Sbfl.  
Abfl.  
Abfl.  
Tbfl.  
Tbfl.  
Bbfl.

This musical score block covers measures 30 through 33. It features the same six staves as the previous block. The music continues in the same key and time signature. The Soprano Flute part has a melodic line with eighth and sixteenth notes. The Alto Flutes have a similar melodic line, often in unison. The Tenor Flute plays a steady eighth-note accompaniment. The Bass Flute provides a harmonic foundation with quarter and eighth notes.

34

Sbfl.  
Abfl.  
Abfl.  
Tbfl.  
Tbfl.  
Bbfl.

This musical score block covers measures 34 through 37. It features six staves: three for woodwinds (Soprano Flute, Alto Flute, and Bass Flute) and three for brass (Trumpet, Trombone, and Baritone/Euphonium). The key signature is one flat (B-flat major or D minor). The woodwinds play a melodic line with some rests, while the brass parts provide harmonic support with rhythmic patterns. The Trombone and Baritone/Euphonium parts have rests in measures 34-36, entering in measure 37.

38

Sbfl.  
Abfl.  
Abfl.  
Tbfl.  
Tbfl.  
Bbfl.

This musical score block covers measures 38 through 41. It continues with the same six staves as the previous block. The woodwinds continue their melodic line. The brass parts are more active, with the Trombone and Baritone/Euphonium playing a rhythmic pattern throughout. The Soprano Flute part has a melodic flourish in measure 39.



42

Sbfl.  
Abfl.  
Abfl.  
Tbfl.  
Tbfl.  
Bbfl.

This musical score block covers measures 42 through 46. It features six staves: Soprano Flute (Sbfl.), two Alto Flutes (Abfl.), two Tenor Flutes (Tbfl.), and Bass Flute (Bbfl.). The key signature is one flat (B-flat major or D minor). The music is written in a 2/4 time signature. The Soprano Flute part has a melodic line with a slur over measures 44 and 45. The Alto Flutes have a similar melodic line, with the second Alto Flute having a rest in measure 45. The Tenor Flutes and Bass Flute provide harmonic support with various rhythmic patterns, including quarter and eighth notes.

47

Sbfl.  
Abfl.  
Abfl.  
Tbfl.  
Tbfl.  
Bbfl.

This musical score block covers measures 47 through 51. It features the same six staves as the previous block. The key signature remains one flat. The Soprano Flute part continues its melodic line with a slur over measures 49 and 50. The Alto Flutes have a melodic line with a slur over measures 49 and 50. The Tenor Flutes and Bass Flute provide harmonic support with various rhythmic patterns, including quarter and eighth notes.

50

Sbfl.

Abfl.

Abfl.

Tblfl.

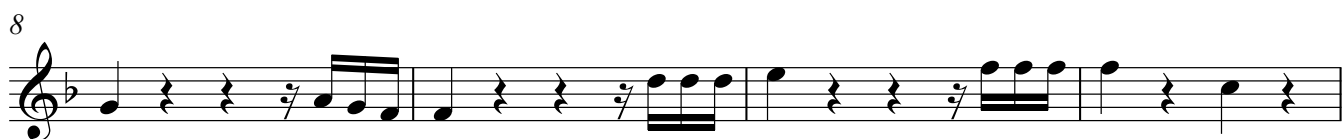
Tblfl.

Bbfl.

Sopranblockflöte

1. zuerst...

Markus Nickel



Markus Nickel



Sopranblockflöte

Sopranblockflöte

17



23



28



1



6



11



17



23



28



33



Sopranblockflöte

38



43

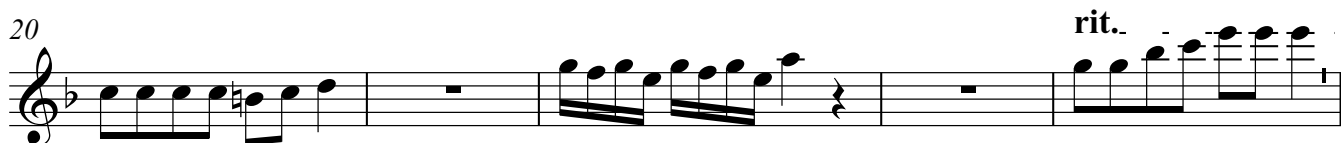


48



# 1. zuerst...

Markus Nickel



# 2. und dann...

1

7

13

20

26

30

# 3. zuletzt...

1

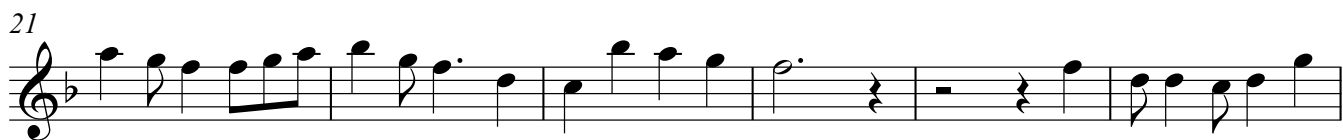
6

11

16

Altblockflöte

21



27



33



38



43



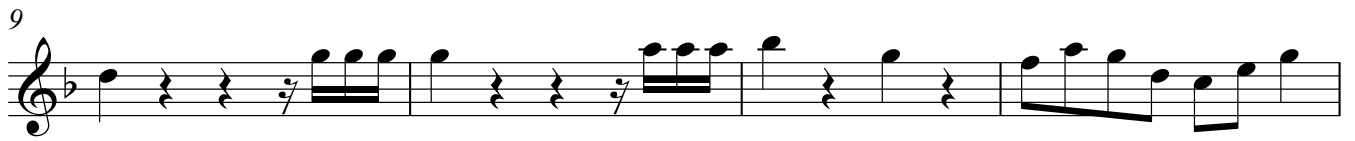
48





# 1. zuerst...

Markus Nickel



# 2. und dann...

Markus Nickel



Altblockflöte

Altblockflöte

19



25



29



3. zuletzt...

Markus Nickel

1



7



14



2

21



27



34

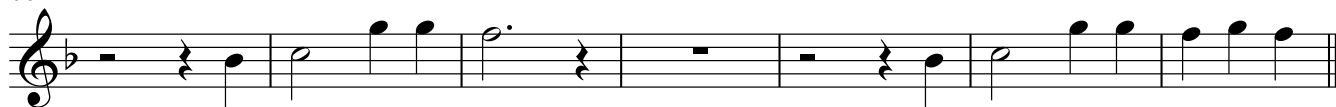


40



Altblockflöte

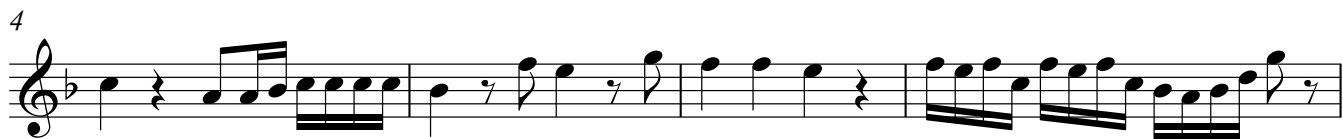
46



Tenorblockflöte

1. zuerst...

Markus Nickel



2. und dann...

Markus Nickel



Tenorblockflöte

Tenorblockflöte

18



24



28



3. zuletzt...

Markus Nickel

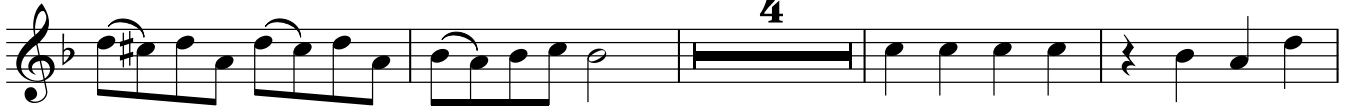
1



7



13



4

21



27



4

37



42



Tenorblockflöte

47



Tenorblockflöte

1. zuerst...

Markus Nickel



Tenorblockflöte

# 2. und dann...

Markus Nickel

1



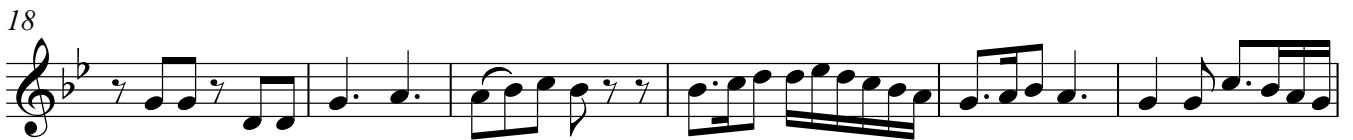
6



12



18



24



28



# 3. zuletzt...

Markus Nickel

1



7



13

2



19





Tenorblockflöte

25



31



40



46



49



Bassblockflöte

1. zuerst...

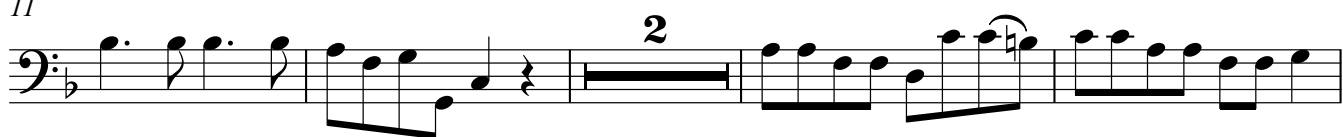
Markus Nickel



6



11



17



24

rit. - - - - -



27



2. und dann...

Markus Nickel

1



8



13



Bassblockflöte

Bassblockflöte

19



25



3. zuletzt...

Markus Nickel

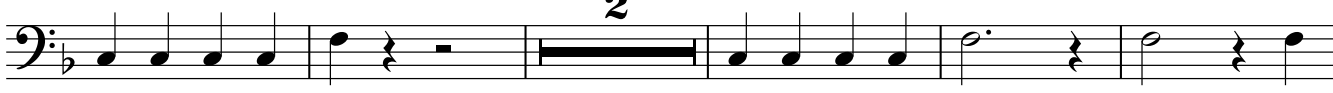
1



7



15



22



28



34



38



43



# Bassblockflöte

48

